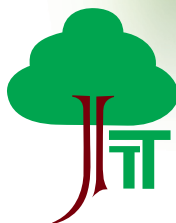


Moritora Scale System

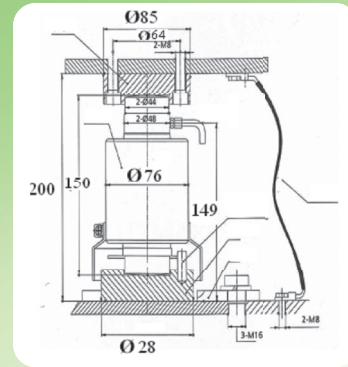


บริษัท เจ.ที.ที. เทค จำกัด
J.T.T.-TECH CO., LTD.

Tel. 0-2754-1860-1 Fax. 0-2754-1471

www.moritorascale.com E-mail: moritora.scale@gmail.com

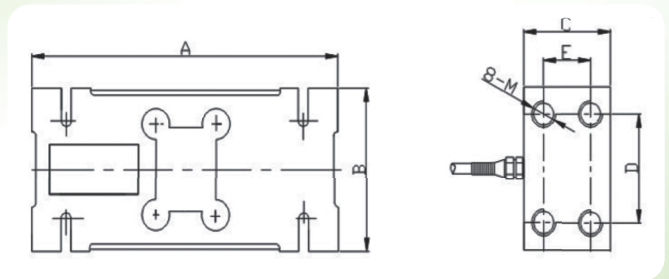
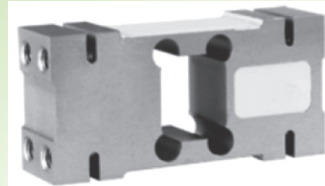
JMT ZSF Load Cell



TECHNICAL PARAMETER

Rated Load :	10,15 ,20, 25,30,40,50T	Operating Temp Range :	- 30 ~+70°C	Sensitivity :	2.0 ± 0.002mV/V
Safe load limit :	150% F.S	Total error :	±0.02%,F.S; ±0.03%F.S	Over load limit :	250% F.S
Creep(30min):	±0.02%F.S	Recommend excitation :	10~12V DC	Zero balance:	±1 %F.S
Maximum excitation:	15 V DC	TCO:	±0.02%F.S/10°C	Protection Class:	IP68
TC SPAN:	±0.02%F.S/10°C	Construction :	Steel ,Stainless Steel	In put resistance:	400±10 Ω(ZSF)
Cable:	-	Output resistance:	352 ± 2 Ω	Length :	10m (10T) 12m (15-25T)
Insulation resistance:	5000M Ω	Diameter :	Ø 5mm		

JMT-XL 8004 Load Cell



TECHNICAL PARAMETER

Rated Load:	50 /100/150/200/300/350/ 500/750/1000/2000/25000kg	Sensitivity:	2.0±0.1% mV/V	Combined Error:	±0.02%FS
Creep Error (30 min):	±0.02%FS	Zero Balance:	±1% FS	TCO:	±0.02% FS/10°C
TC Span:	±0.02% FS/10°C	Resistance:	385±5Ω	Out put Resistance:	351±5Ω
Insulating Resistance:	≥5000MΩ	Operating Temp. Range:	-30 ~+ 70°C	Maximum Safe Overload:	120%FS
Ultimate Overload:	200%FS	Recommend Excitation:	10~12 V DC	Maximum Excitation:	15 V DC
Sealing Class:	IP 65	Cable:	Length=1m	Citation:	GB/T7551-1997/OMLR 60
Mode of Connection:	Red(input+) Black(Input-). Green(Output+). White(Output-)				

Size: A x B x C (mm) Thread Hole : 8-M

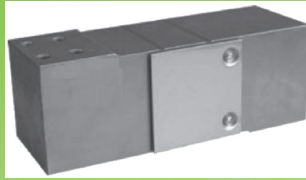
Ca. / Size	50~200kg	250~500kg	750~2500kg.
A	156	146	176
B	75	95	125
C	44	60	76.20
D	50	70	95
E	24	36	46
M	M12	M12	M16

JMT CABLE Load Cell

1. The cable have 4 core and 6 core
2. Low capacity , high capacitive symmetry
3. Customer can choose the color according to requirement.
4. Outer diameter : 4 core : 5.2mm ±0.2 6 core : 6.3mm± 0.23
5. Coating material : PRVP
6. Wire Cross Section mm : 0.2
7. Wire Resistance Ω/mm : ≤ 0.9
8. Capacity PF/M : ≤80
9. Screen : 1
10. Temperature Range : -30 ~ + 85°C
11. Note : we can produce according to customer is requirement.

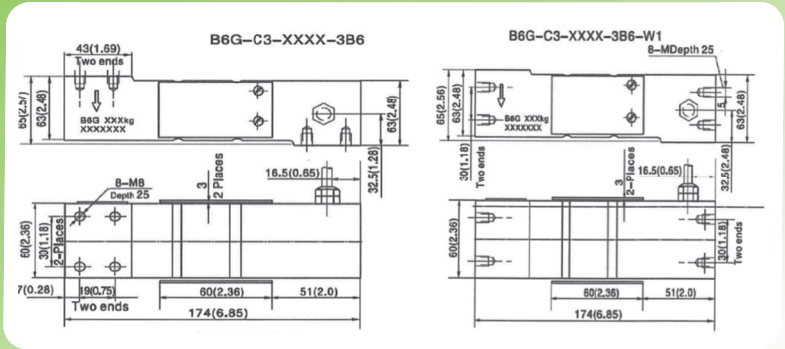


JMT B6G Load Cell



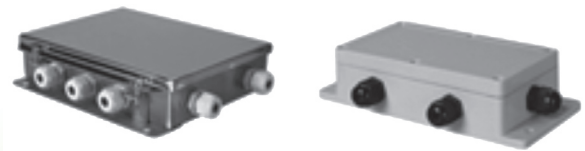
Dimensions

Capacity	Accuracy	Part-Number
100 kg.	C3	B6G-C3 -100kg. -3 B6
150 kg.	C3	B6G-C3 -150kg. -3 B6
200 kg.	C3	B6G-C3 -200kg. -3 B6
250 kg.	C3	B6G-C3 -250kg. -3 B6
300 kg.	C3	B6G-C3 -300kg. -3 B6
500 kg.	C3	B6G-C3 -500kg. -3 B6
600 kg.	C3	B6G-C3 -600kg. -3 B6



Accuracy Class	-	C3
Output sensitivity = (FS)	m v/v	2.0 ± 0.2
Maximum capacity (E Max)	kg	100,150,200,250,300,500,600
Maximum number of load cell intervals (N_{LC})	-	3000
Ratio of minimum LC verification interval $Y = E_{Max} / V_{min}$	-	7500
Combined Error	%FS	±0.020
Safe overload	of E Max	150%
Ultimate overload	of E Max	300%
Zero balance	of FS	<±1.0%
Excitation ,recommended voltage	V	5 ~ 12
Excitation maximum	V	8
Terminal resistance , input	Ω	385 ± 5
Terminal resistance , Output	Ω	350 ± 3
Insulation impedance	MΩ	≥5000 (at 50VDC)
Temperature range, compensated	°C	-10 ~ + 40
Temperature range, operating	°C	-35 ~ +65
Element material		Stainless, Steel
Ingress Protection	IP66	

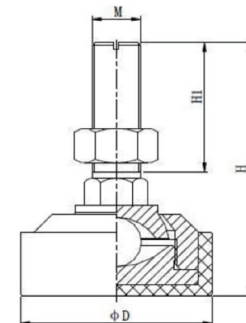
JMT Junction Box



Model Collection

Box material	Junction Box Model	Types	Adjustment Way	Junction Size	Install Size with Scale Body
Stainless Steel	SBE	Lines	Exc.+ (Red) ; Exc. - (Black) Sig.+ (Green) ; Sig.- (White)	120 x 142 x46	120 (Hole diameter Ø6)
	"H" Type	4 Lines , 6 Lines	Exc.+ (Red) ; Exc. - (Black) Sig.+ (Green) ; Sig.- (White)	160 x 160 x52	137*137 Ø6

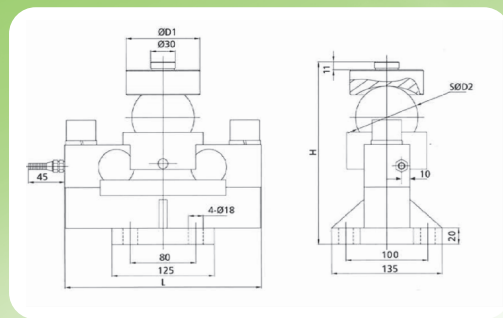
The Foot For Load Cell



Unit: mm

Applicable range	M	H	H1	D
≤500kg	M12	86	45	62
1000~2000kg	M16	86	45	62
3000~5000kg	M20x1.5	90	50	62

JMT QS-A Load Cell

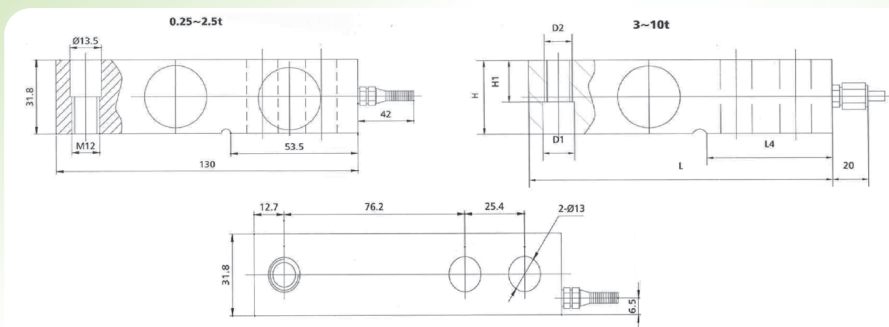
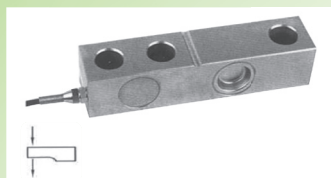


Rated Load (t)	5	10, 15, 20, 25, 30,	40t
D1	68	88	88
D2	50.8	76.2	76.2
H	168.8	224.7	230.7
L	224	240	240

TECHNICAL PARAMETER

Rated Load :	5, 10, 15, 20, 25, 30, 40, 50t	Operating Temp Range :	- 30 ~ +70°C	Sensitivity :	2.0 ± 0.002m V/V (DEE)
Safe load limit :	150, 120(40~50t)% F.S	Total error :	±0.02%, F.S; ±0.03%F.S	Over load limit :	300, 200(40~50t) %F.S
Creep (30min):	±0.02%F.S	Recommend excitation :	10~12V DC	Zero balance:	±1 %F.S
Maximum excitation:	15 V DC	TCO:	±0.02%F.S/10°C	Protection Class:	IP67(5t)IP68(10~40t)
TC SPAN:	±0.02%F.S/10°C	Construction :	Alloy Steel	In put resistance:	750±10Ω
Cable: Length L:	5m(1~4.7t)6mm	Output resistance:	703 ± 2, 703±5 Ω (L≥ 15m)	Insulation resistance:	5000M Ω
Diameter :	Ø6 mm				

JMT SQB-A/SS Load Cell

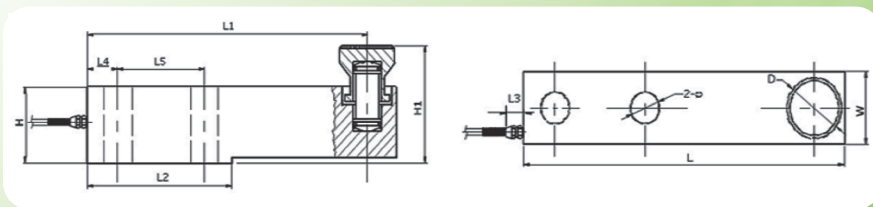


Rated Load	L	L1	L2	L3	L4	H/B	H1	D1	D2	D3
3,5	171.5	19	95.3	38.1	72.5	38.1	26	Ø20	M18x1.5	Ø27
7.5,10	225.5	25.3	124	50.8	102	50.8	25.4	Ø27	M24x2	Ø20

TECHNICAL PARAMETER

Rated Load :	0.25, 0.5, 0.75, 1, 1.5, 2, 2.5, 3, 5, 7.5, 10t	Operating Temp Range :	- 30 ~ +70°C	Sensitivity :	3.0 ± 0.003m V/V(0.5t~10); 2.0±0.002m V/V(0.25t)
Safe load limit :	150% F.S	Total error :	±0.02%,F.S; ±0.03%F.S	Over load limit :	250 %F.S
Creep (30min):	±0.02%F.S	Recommend excitation :	10~12V DC	Zero balance:	±1 %F.S
Maximum excitation:	15 V DC	TCO:	±0.02%F.S/10°C	Protection Class:	IP67(0.25-0.75t)IP(1-10t)
TC SPAN:	±0.02%F.S/10°C	Construction :	Alloy ,Stainless Steel	In put resistance:	400±10 Ω
Cable: Length L:	5m(1~4.7t)6mm	Output resistance:	352 ± 2 Ω	Insulation resistance:	5000M Ω
Diameter :	Ø6 mm				

JMT SB Load Cell

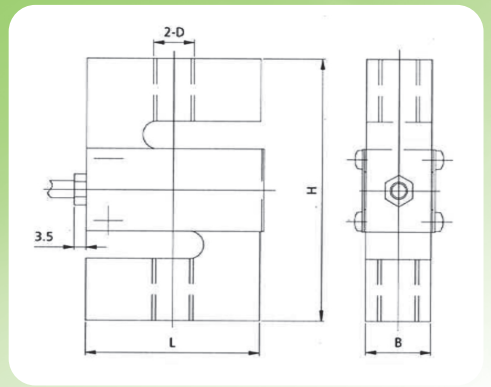
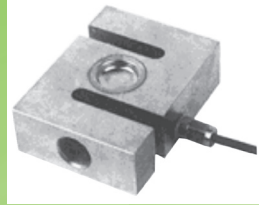


Rated Load	L	L1	L2	L3	L4	H1	H2/B	B1	H3	H4	D1	D2	D3
0.5,1,2,3	203	95	64	98	22	43	36.6	7	30.5	8	Ø32	Ø16	Ø13
5,7.5	235	110	66	124	22	52	48	7	30	12	Ø38	Ø22	Ø21
10	279	133	82	140	32	67	60	8.5	20	8.5	Ø48	Ø32	Ø28
15,20,25	318	153	89	159	38	82.5	70	9.5	24	9.5	Ø54	Ø38	Ø34

TECHNICAL PARAMETER

Rated Load :	0.5, 1, 2, 3, 5, 7.5, 10, 15, 20, 25t	Operating Temp Range :	- 30 ~ +70°C	Sensitivity :	2.0 ± 0.002mV/V
Safe load limit :	150% F.S; 200%F.S(20~25t)	Total error :	±0.02%, F.S; ±0.03%F.S	Over load limit :	300 F.S %F.S(20~25t)
Creep(30min):	±0.02%F.S	Recommend excitation :	10~12V DC	Zero balance:	±1 %F.S
Maximum excitation:	15 V DC	TCO:	±0.02%F.S/10°C	Protection Class:	IP67(0.5t),IP68(1~25t)
TC SPAN:	±0.02%F.S/10°C	Construction:	Alloy ,Stainless Steel	In put resistance:	352±10 Ω
Cable: Length L:	2.6m(0.5~2t)	Output resistance:	352 ± 2 Ω	Insulation resistance:	5000M Ω
Diameter :	Ø6 mm				

JMT DEE-A-S-SS Load Cell

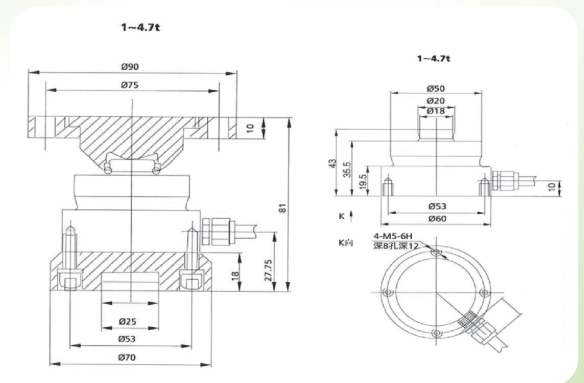


(kg)	D	L	H	B
100~500	M12	51	76.2	19.1
1000	M12	51	76.2	25.4
2000~5000	M20x1.5	76.2	100.4	31.8

TECHNICAL PARAMETER

Rated Load :	100,200,250,300,~5000kg	Operating Temp Range :	-30 ~+70°C	Sensitivity :	2.0 ± 0.002mV/V
Safe load limit :	120% F.S	Total error :	±0.02%,F.S; ±0.03%F.S	Over load limit :	200 F.S
Creep (30min):	±0.02%F.S	Recommend excitation :	10~12V DC	Zero balance:	±1 %F.S
Maximum excitation:	15 V DC	TCO:	±0.02%F.S/10°C	Protection Class:	IP67(100~1000kg),IP68(2000-5000kg)
TC SPAN:	±0.02%F.S/10°C	Construction :	Alloy -SS Stainless Steel	In put resistance:	400±10 Ω
Cable: Length:	5m	Output resistance:	352 ± 2 Ω	Insulation resistance:	5000M Ω
Diameter :	Ø6 mm				

JMT NHS-A/SS Load Cell

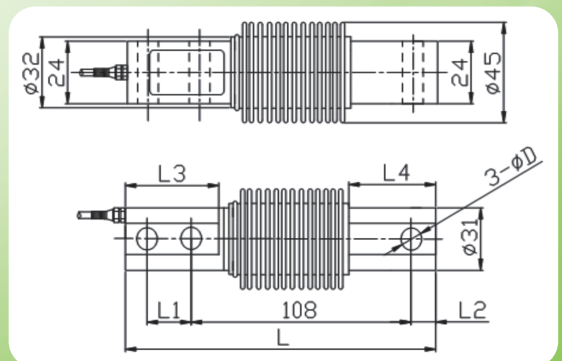


Rated Load	A	B	C	D	E	H	K	J	N
10~22	45	75	55	80	100	95	20	11.5	10
33	58	95	68	95	120	120	25	13	12
47	80	130	92	130	170	140	30	17.5	20
68	80	130	92	130	170	150	30	17.5	20
100	100	150	110	150	200	200	40	25	22

TECHNICAL PARAMETER

Rated Load :	1,2,2,3,3,4,7,10,15,22,33,47,68,100t	Operating Temp Range :	-30 ~+70°C	Sensitivity :	2.85 ± 0.005m V/V
Safe load limit :	150% F.S	Total error :	±0.03, ±0.05, ±0.1%F.S	Over load limit :	200 %F.S
Creep (30min):	±0.03%F.S	Recommend excitation :	10~12V DC	Zero balance:	±1 %F.S
Maximum excitation:	15 V DC	TCO:	±0.03%F.S/10°C	Protection Class:	IP68
TC SPAN:	±0.03%F.S/10°C	Construction :	-A Alloy Steel -SS Stainless	In put resistance:	1450±10 Ω
Cable: Length L:	8m(1~4.7t) 5mm	Output resistance:	352 ± 2 Ω	Insulation resistance:	5000M Ω

JMT HSX Load Cell



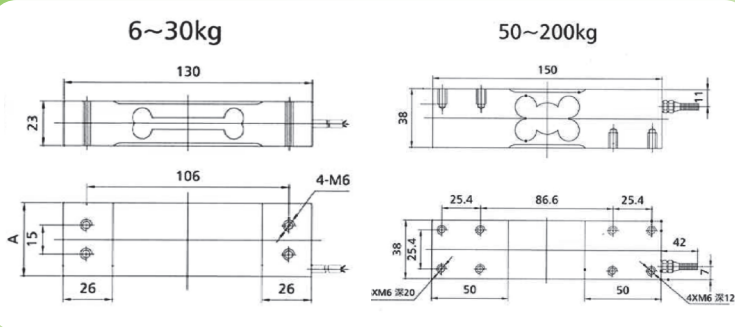
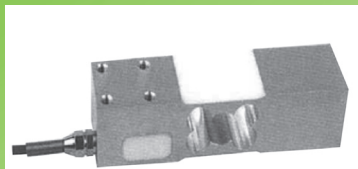
Rated Load (kg)	D
5, 10, 20, 30, 40, 50, 75	Ø8.2
100, 150, 200, 250	
300,500	Ø10.2

TECHNICAL PARAMETER

Rated Load :	25, 50, 100, 200kg	Operating Temp Range :	-30 ~+70°C	Sensitivity :	2.00 ± 0.002m V/V
Safe load limit :	150% F.S	Total error :	±0.02, ±0.03%F.S	Over load limit :	200 %F.S
Creep (30min):	±0.02%F.S	Recommend excitation :	10~12V DC	Zero balance:	±1 %F.S
Maximum excitation:	15 V DC	TCO:	±0.02%F.S/10°C	Protection Class:	IP68
TC SPAN:	±0.02%F.S/10°C	Construction :	-A Alloy Steel Stainless Steel	In put resistance:	400±10 Ω
Cable: Length L:	5m	Output resistance:	352 ± 2 Ω	Insulation resistance:	5000M Ω
Diameter :	Ø5 mm				

JMT AMI Load Cell

Rated Load (kg)	A
6, 8, 15	30
30	38

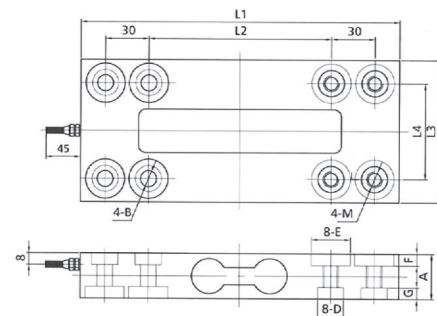
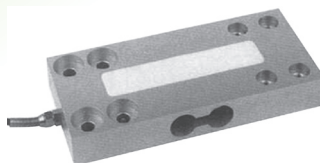


TECHNICAL PARAMETER

Rated Load :	6,8,15, 30,50,100,150,200kg	Operating Temp Range :	- 30 ~+70°C	Sensitivity :	1.8 ± 0.002m V/V
Safe load limit :	150% F.S	Total error :	±0.03, ±0.05, ±0.1%F.S	Over load limit :	200 %F.S
Creep(30min):	±0.03%F.S	Recommend excitation :	10~12V DC	Zero balance:	±1 %F.S
Maximum excitation:	15 V DC	TCO:	±0.02%F.S/10°C	Protection Class:	-
TC SPAN:	±0.02%F.S/10°C	Construction :	-A Alloy Steel –SS Stainless	In put resistance:	400±10 Ω
Cable: Length L:	8m(1~4.7t) 5mm	Output resistance:	352 ± 2 Ω	Insulation resistance:	5000M ≥Ω
Diameter :	Ø6 mm				

JMT BMI Load Cell

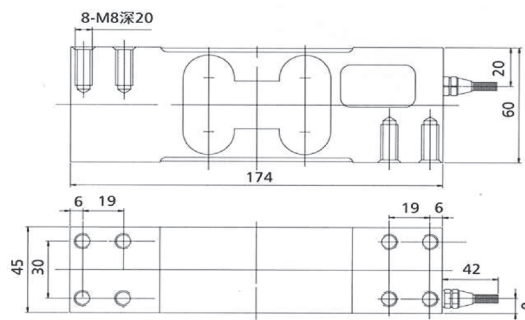
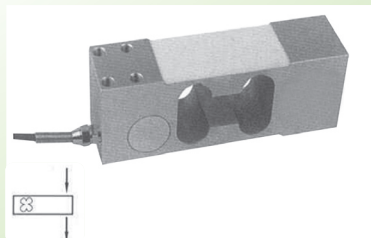
Rated Load	50,100	150	300	500	1000, 1200
A	25	27	31	36	47
B	Ø9	Ø11	Ø11	Ø11	Ø13
M	M8	M10	M10	M10	M12
D	Ø18	Ø18	Ø18	Ø18	Ø22
E	Ø18	Ø27	Ø27	Ø27	Ø27
F	8	8	8	8	10
G	8	8	8	8	10
L1	200	220	220	220	220
L2	110	126	126	126	126
L3	80	98	98	98	98
L4	56	66	66	66	66



TECHNICAL PARAMETER

Rated Load :	50, 100, 150, 300, 500, 1000, 2000t	Operating Temp Range :	- 30 ~+70°C	Sensitivity :	1.8 ± 0.002m V/V
Safe load limit :	150% F.S	Total error :	±0.03, %F.S	Over load limit :	200 %F.S
Creep (30min):	±0.03%F.S	Recommend excitation :	10~12V DC	Zero balance:	±1 %F.S
Maximum excitation:	15 V DC	TCO:	±0.02%F.S/10°C	Protection Class:	IP67
TC SPAN:	±0.02%F.S/10°C	Construction :	Aluminum	In put resistance:	400±10 Ω
Cable: Length L:	8m(1~4.7t) 5mm	Output resistance:	352 ± 2 Ω	Insulation resistance:	5000M Ω

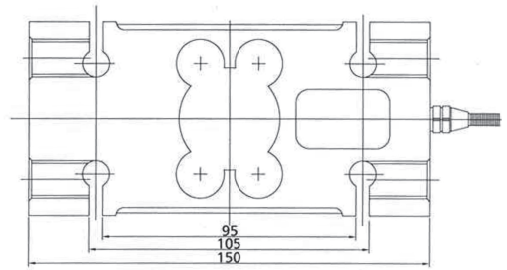
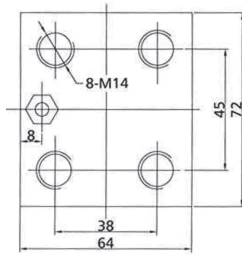
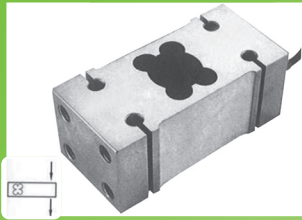
JMT ILEB-A Load Cell



TECHNICAL PARAMETER

Rated Load :	50,100, 150, 200, 250, 300, 500, 800, 1000kg	Operating Temp Range :	- 30 ~+70°C	Sensitivity :	2.0 ± 0.003m V/V
Safe load limit :	150% F.S	Total error :	±0.02%F.S; ±0.03%F.S	Over load limit :	200 %F.S
Creep (30min):	±0.03%F.S	Recommend excitation :	10~12V DC	Zero balance:	±1 %F.S
Maximum excitation:	15 VDC	TCO:	±0.02%F.S/10°C	Protection Class:	IP67
TC SPAN:	±0.02%F.S/10°C	Construction:	Alloy Steel	In put resistance:	400±10 Ω
Cable: Length :	3m	Diameter:	junction 5mm	Output resistance:	352 ± 2 Ω
Insulation resistance:	5000M Ω				

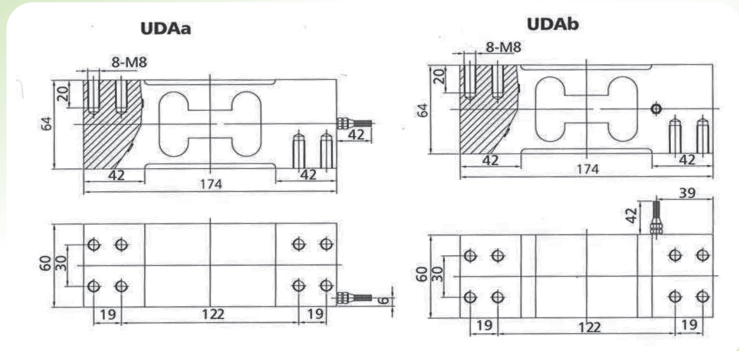
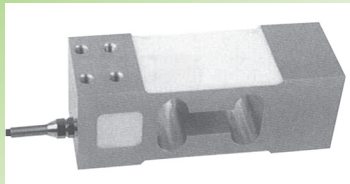
JMT IL Load Cell



TECHNICAL PARAMETER

Rated Load :	50, 100, 200, 250, 500, 750, 1000, 2000 kg	Operating Temp Range :	- 30 ~+70°C	Sensitivity :	2.0 ± 0.002m V/V
Safe load limit :	150% F.S	Total error :	±0.02 %; ± 0.03% F.S	Over load limit :	200 %F.S
Creep (30min):	±0.02%F.S	Recommend excitation :	10~12V DC	Zero balance:	±1 %F.S
Maximum excitation:	15 V DC	TCO:	±0.02%F.S/10°C	Protection Class:	IP67;IP68 (ILGB-A-SS)
TC SPAN:	±0.02%F.S/10°C	Construction :	A Alloy Steel-SS Stainless	In put resistance:	400±10Ω
Cable: Length L:	8m(1~4.7) 5mm	Output resistance:	352 ± 2 Ω	Insulation resistance:	5000M Ω

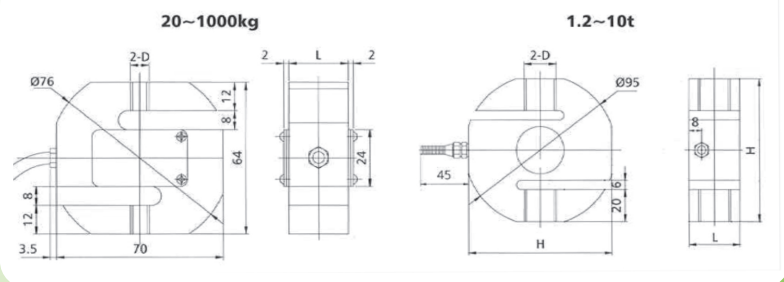
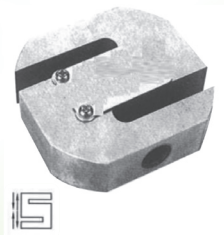
JMT UDA-A Load Cell



TECHNICAL PARAMETER

Rated Load :	150, 200, , 300, 500, 800, kg	Operating Temp Range :	- 30 ~+70°C	Sensitivity :	1.8 ± 0.002m V/V
Safe load limit :	150% F.S	Total error :	±0.03%F.S	Over load limit :	200 %F.S
Creep(30min):	±0.03%F.S	Recommend excitation :	10~12V DC	Zero balance:	±1 %F.S
Maximum excitation:	15 VDC	TCO:	±0.02%F.S/10°C	Protection Class:	IP67
TC SPAN:	±0.02%F.S/10°C	Construction:	Aluminum	In put resistance:	400±10 Ω
Cable: Length :	2m	Output resistance:	352 ± 2 Ω	Insulation resistance:	≥ 5000M Ω
Diameter :	Ø5 mm				

JMT PST-A-S-SS Load Cell



Rated Load (kg)		D
20~150	M8	12
200~500	M12	20
700~1000	M12	25

Rated Load (t)	D(mm)	L(mm)	L	H
1.2~5	M20	32		90
7.5	M24	40		90
10	M30x2	50		110

TECHNICAL PARAMETER

Rated Load :	20,-1000kg 1.2, 1.5, -10t	Operating Temp Range :	- 30 ~+70°C	Sensitivity :	2.0 ± 0.002mV/V
Safe load limit :	120% F.S	Total error :	±0.02%F.S; ±0.03%F.S	Over load limit :	200 F.S
Creep(30min):	±0.02%F.S	Recommend excitation :	10~12V DC	Zero balance:	±1 %F.S
Maximum excitation:	15 V DC	TCO:	±0.02%F.S/10°C	Protection Class:	IP67(20~1000kg), IP68(1.2-7.5T)
TC SPAN:	±0.02%F.S/10°C	Construction :	Alloy Steel	In put resistance:	400±10 Ω
Cable: Length:	5m	Output resistance:	352 ± 2 Ω	Insulation resistance:	5000M Ω
Diameter :	Ø6 mm				

JMT Table Scale

1. Smart Design with bright dual - LED display
2. Auto calibration and waterproof
3. High precision load cell lead to a fast and exact display
4. AC/DC supply with internal rechargeable battery
5. Easy to operate high performance

TECHNICAL PARAMETER

Capacity :	3Kg 6Kg 15Kg (พิกัดเครื่องชั่ง)
Division :	1g 2g 5g 10g (ค่าความละเอียดเครื่องชั่ง)
Radix Point Setting:	0 1 2 3 (จุดทศนิยม)
Minimum :	1g 2g 5g 10g (ค่าต่ำสุดที่สามารถชั่งได้)
Resolution :	1/3000
Dimension:	(mm) 225*245*155 (ขนาดเครื่องชั่ง)



JMT Bench Scale

Technical parameters and function character

0.7-1.5mm thickness stainless steel platform, durable, resist milling, easy cleaning.



Accuracy class

(1) : operation temperature

1. Indicator 0ℓ +40
2. Scale system including load cell: -30ℓ +65

related Humidity RH≤90% System power

1 AC187 242.50Hz

2 6V,2.8AH build-in storage maintenance battery (2 Pcs. in series)

with Number Tare, Button Tare (function) AC/ DC double use and chargeable.

Technical parameter

Model	TCS-30	TCS-60	TCS-150	TCS-300	TCS-600
(kg) Max capacity	30	60	150	300	600
division value (g)	10	20	50	100	200
platform Size (cm)	A:30×40 B:40×50 C:50×60 D:60×80 F:60×70 G: 80×80				



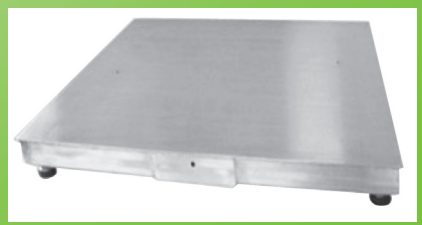
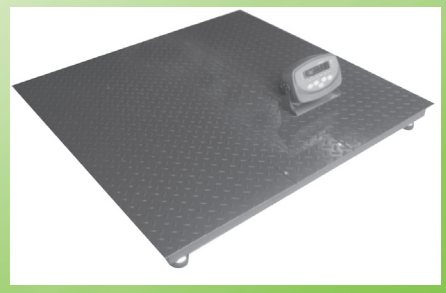
JMT-SCS Floor Scale

Type Floor Scale

Suitable for weighing common goods not suitable for weighing trucks.

Single-deck small floor scales (without frame)

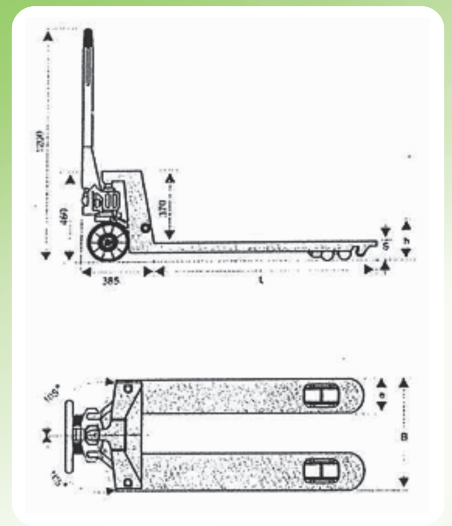
Scale body material :	Common carbon steel (flat plate or checker plate), Stainless steel, aluminum alloy or other material
Surface finishing:	Common carbon steel-painting or plastic spraying, Stainless steel-sand blasting, draw benching or polishing.
Scale body:	Floor-bending U-shape beam, common type steel. Scale body color :Silver gray, dark blue, gray, golden, etc.
Rated Load:	1, 2, 3, 5T
Platform Size:	1.0m x1.0m x 110mm, 1.2m x1.2m x 110mm, 1.5m x1.5m x 110, 2.0 x 2.0m
Max. Cap :	0.3t – 10t



JMT Hand Pallet Trucks

มีให้เลือกทั้งรุ่นมาตรฐานและรุ่นที่ต่ำพิเศษ

- ตัวล้อสูบลมกับลวดไนท์ และก้านสูบลม
- โครงสร้างที่แข็งแรง และระบบป้องกันการใช้งานเกินกำลัง
- วาล์วปล่อยที่สามารถควบคุมความเร็วการปล่อยลงได้
- ปลายงาโค้งเรียวยาวพร้อมลูกกลิ้งในลอน ช่วยให้เข็นเข้าและออกจากพาเลทได้ง่าย
- ง่ายต่อการดูแลบำรุงรักษา



ข้อมูลทางเทคนิค รุ่น Model		3T-VP มาตรฐาน	VP/WL มาตรฐาน	VP/NL หน้าแคบ	VP/NS2 ต่ำพิเศษ	VP/NS3 ต่ำพิเศษ	VPL ต่ำพิเศษ
รับน้ำหนัก	กก. (kg.)	3000	2500	2500	2000	1500	1000
ความสูงลดลงต่ำ	S มม. (mm)	85	85	85	51	51	35
ความสูงยกขึ้นสูงสุด	h มม. (mm)	200	200	200	165	165	90
งายาว	L มม. (mm)	1220	1220	1220	1000	1000	1120
ขนาดของงาแต่ละข้าง	e มม. (mm)	160	160	160	160	160	160
ความกว้างของแผงงา	B มม. (mm)	685	685	520	540	685	685
ล้อหลัง		P.U.	P.U.	P.U.	P.U.	P.U.	P.U.
ขนาดเส้นผ่าศูนย์กลาง	มม. (mm)	200	200	200	180	180	180
หนา	มม. (mm)	50	50	50	50	50	50
ล้อหน้า ล้อคู่		P.U.	P.U.	P.U.	Nylon	Nylon	Steel
ขนาดเส้นผ่าศูนย์กลาง	มม. (mm)	82	82	82	50	50	34
หนา	มม. (mm)	70	70	70	70	70	58
น้ำหนักสุทธิ	กก. (kg.)	75-102					

JMT- Crane Scale

Minimum Safe distance

1000°C	1200°C	1400°C	1600°C
.6m	1.8m	2m	2.2m

Specification

Model	Max (Kg)	Mix. (kg)	Division (kg)	Total	display Counts (n)
JXCS - 1 - SH	1000	1000	10	0.5	2000
JXCS - 2 - SH	2000	2000	20	1	2000
JXCS - 3 - SH	3000	3000	20	1	3000
JXCS - 5 - SH	5000	5000	40	2	2500
JXCS - 10 - SH	10000	10000	100	5	2000
JXCS - 15 - SH	15000	15000	100	5	3000



Model	A	B	C	H	N.W
	(mm)				(kg)
JXCS - 1 - SH	100	20	40	600	14
JXCS - 2 - SH	100	20	40	600	14
JXCS - 3 - SH	130	20	45	720	24
JXCS - 5 - SH	145	20	60	850	44
JXCS - 10 - SH	170	25	85	900	60
JXCS - 15 - SH	170	25	85	900	60

INDICATOR MORITORA XK3118T1

Brief Introduction

XK3118T1 weighing indicator adopts high anti-jamming. Single-chip microprocessor and high precision $\Sigma - \Delta$ A/D Conversion technology, widely applied in platform scale, platform balance and other weighing applications.

Features:

Kg/ lb one key switch, total, upper and lower limit, animal scale, RS232 communication

Technical Parameter

- Accuracy Class : III, n=3000
- A/D Conversion Mode : Adopts $\Sigma - \Delta$ Technology, 10 Times per Second
- Input Sensitivity ≥ 1.5 V/e
- Excitation : DC 5V
- Input Signal: -16mV ~18 mV
- Load Cell Connection Mode : 6 Wire Connection (Load Wire Auto Compensation)
- Division 1/2/5/10/20/50 Optional
- Power Supply : AC 85~245V , 50Hz~60Hz ;Build-in Battery DC 6V/4AH
- Working Temperature : 0~40°C; Working Humidity $\leq 90\%$ RH
- Working Temperature : -10°C-40°C, Humidity 10%~85%, No Condensation
- Storing Temperature : -30°C-60°C, Humidity 10%~70%、 No Condensation



XK3118T1



A12 Indicator

- Fast speed, high precision $\Sigma - \Delta$ A/D conversion
- Anti-vibration software
- Applied in platform scale, floor scale, weighing system equipped with 1-4 load Cells.

Features:

- A/D conversion with readability 1/30000
- Use inner code to replace weight observing and analysis tolerance
- Software to strength anti-vibration ability
- Zero-tracking, Zero range setup (auto/manual)
- Setup digital filter intensity, range and stable time
- Counting function with unit data save protection in case of power off
- Alarm for low battery and auto power off when low battery

Optional function:

1. KG/LB switch function
2. Animal scale function (A12, A12S only)
3. Two fixed- value outputs function with TTL output



A12 Indicator



Parameters:

Model	A12 / A12S	A12E
Model	A12 / A12S	A12E
Input signal range	-10mV~15mV	
Input sensitivity	$\geq 1\mu\text{V/e}$	
Load cell Excitation	Dc 5V: $\leq 150\text{mA}$	
Max. load cell connection	4 at 350 ohm	
Display	6bits LCD,6status indications	6 bits LED,6 status indication
Optional interface	RS232C serial communication	
transmission distance	RS232C ≤ 30 meters	

JMT – Indicator XK3118K9P

Functional Characteristics

- Accuracy Class : 3, n = 3000 (Authorized)
- Excitation : + DC 5 V
- Video Model : 7bits LED ,0.8 inch ,7 bits status indication,1 bits AC indicator.
3 bits power indication
- Keyboard : 3 row x 5 line , 15 keys
- Screen Output Printer Support : Panasonic : KX-P1121, KX-P1131
EPSON : LQ300K + , LQ1600K
- Communication Interface Output Format : RS 232/RS485 Optional Baud rate Optional
- Data Memory : Vehicle Tares: 1024
- Goods Name : 100
- Weight Record : 1024
- Power Supply : Wide Range AC Voltage Input : USA
- Standard Power Supply, 85 -264 VAC ,50 – 60 Hz
- DC Battery Input : 12 V Lead – acid Battery , Power indicator.



XK3118K9P



JMT- Truck Scale

Movable Truck Scale

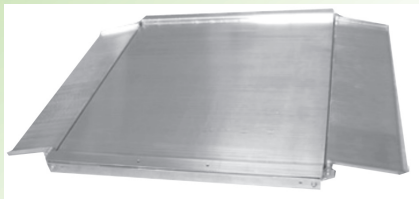
It mainly uses the place which needs to changes weighing place occasionally. Without making foundation, the movable truck scale is with double ramps, with 4 movable wheels, easy to operate.
 Max. Cap. <=50t; Max platform length<=9m; Weighing accuracy III class.

Other specification

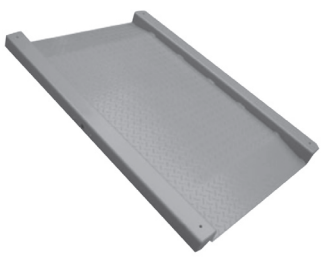
Require flat concrete ground, the thickness of ground is not less than 200mm. Be fit for some seasonal place, such as grain depot, fruit market etc. Please take care relative position—scale body, ramps and movable wheels when using, and assure that do not hit each other.



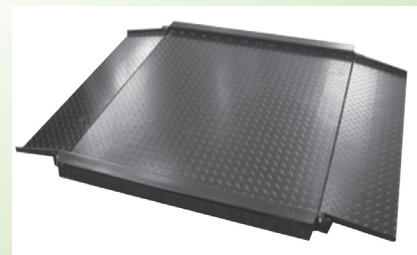
Mini truck scale steel



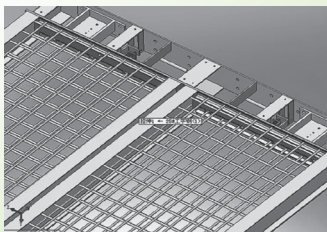
All S.S., ultra-low, Floor Scale Stainless



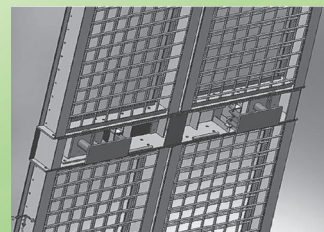
Y8-IL ultra-low integrated with Platform Scale



CC-M portable low profile floor scale (0,3,0,6,1,5t)



Ultra low carbon ;steel



- Automatic replacement structure
- Short slope 30m
- Superficial epoxy baking / sand blasting, polishes and anode processes
- Floor specification (L x W)(m x m):0.8x0.8,1.0x1.0,1.2x1.2 , 2.5 x5, 3 x7 , 3 x 8,3x 9,3 x 12, 3 x18 (เท่านั้นเหล็ก)
- low floor 35mm-45mm
- No need t adjust the limit



MORI TORA

1214-1216 M.6 Sukumwit Rd, Samrongnua, Muang, Samutprakarn, Thailand 10270

1214-1216 ม.6 ก.สุขุมวิท ต.สำโรงเหนือ อ.เมือง จ.สมุทรปราการ 10270

Tel. : (662) 754-1860-1 Fax (662) 754-1471 E-mail : info@jtt-tech.com, jtt-tech@hotmail.com